

Wedge Anchor KDK

galvanized, hot dip galvanized*
and stainless steel A4

with European Technical Approval for cracked and non-cracked concrete

● **Areas of application**

The wedge anchor can be used for medium and heavy through fixings in non-cracked concrete like brackets, cable trays, channels, suspended ceilings, ducts, metal constructions, supports, hand rails or shelf feet.

● **Characteristics**

- Small drilling expenditure
- Quick assembly
- Perfect for through fixings
- Galvanized, hot-dip galvanized or in stainless steel

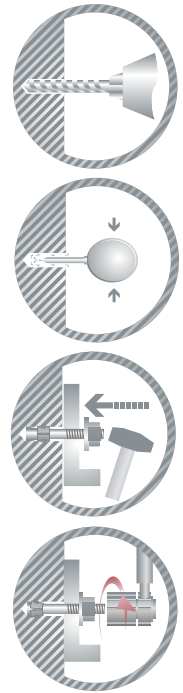
● **Impact**

The wedge anchor is hammered in the drill hole. While tightening the nut, respecting the given torque moments, the cone of the wedge anchor pulls itself into the tie-clip, spreads this and presses it against the building material.

* Not approved

● **Operating instructions:**

- Drill the hole (see Technical Data).
- Clean the drill hole.
- Set KDK through the fixture and hit it into the drill hole.
- Tight the nut with a torque moment wrench (see Technical Data)



● **Technical Data:**

KDK (Drilling diameter)		M 8	M 10	M 12	M 16	M 20*
Depth of drill hole	[mm]	65	70	90	110	130
Torque moment for cracked concrete	[Nm]	20	40	65	130	200
Torque moment for non-cracked concrete	[Nm]	15	30	50	100	160
Minimum thickness of concrete	[mm]	100	100	120	160	200
Spacing	[mm]	50	55	100	90	105
Edge distance	[mm]	60	100	150	110	125

● **Characteristic values $N_{Rk,p}$, recommended load F_{Rd} and partial safety factors in concrete C 20 / 25**

KDK (Drilling diameter)		M 8	M 10	M 12	M 16	M 20*
Cracked concrete	$N_{Rk,p}$ [kN]	3	6	7,5	12	16
Cracked concrete	F_{Rd} [kN]	1,7	3,3	4,2	6,7	8,8
Non-cracked concrete	$N_{Rk,p}$ [kN]	9	12	16	20	30
Non-cracked concrete	F_{Rd} [kN]	5	6,7	8,9	11,1	16,6
Partial safety factor		1,8	1,8	1,8	1,8	1,8

* Not approved

Date 10.2012